

GMU Team (Level 0)

NOVEC

Third Party Attachment Project Status

10/17/2013

Matt Blanck - John O'Neill - Doug Smith



Where Innovation Is Tradition

Overview

- Problem Statement
- Scope
- Approach & Task Description
- NOVEC Meetings Summary – 9/27, 10/4, 10/17, 10/22
- Current Project Snags

Problem Statement

- Dual-use of the utility poles with 3rd party vendors poses challenges sharing costs
 - Tree trimming, pole replacement/upgrade & storm repair
- A system is desired to enable NOVEC to better capture the shared costs
- The objective is to improve cost sharing through improved tracking of 3rd party attachments

Scope

- Focus is only on understanding internal process improvements within the NOVEC division
- Provide reports suggesting options for improvements in the current NOVEC system

Project Proposal

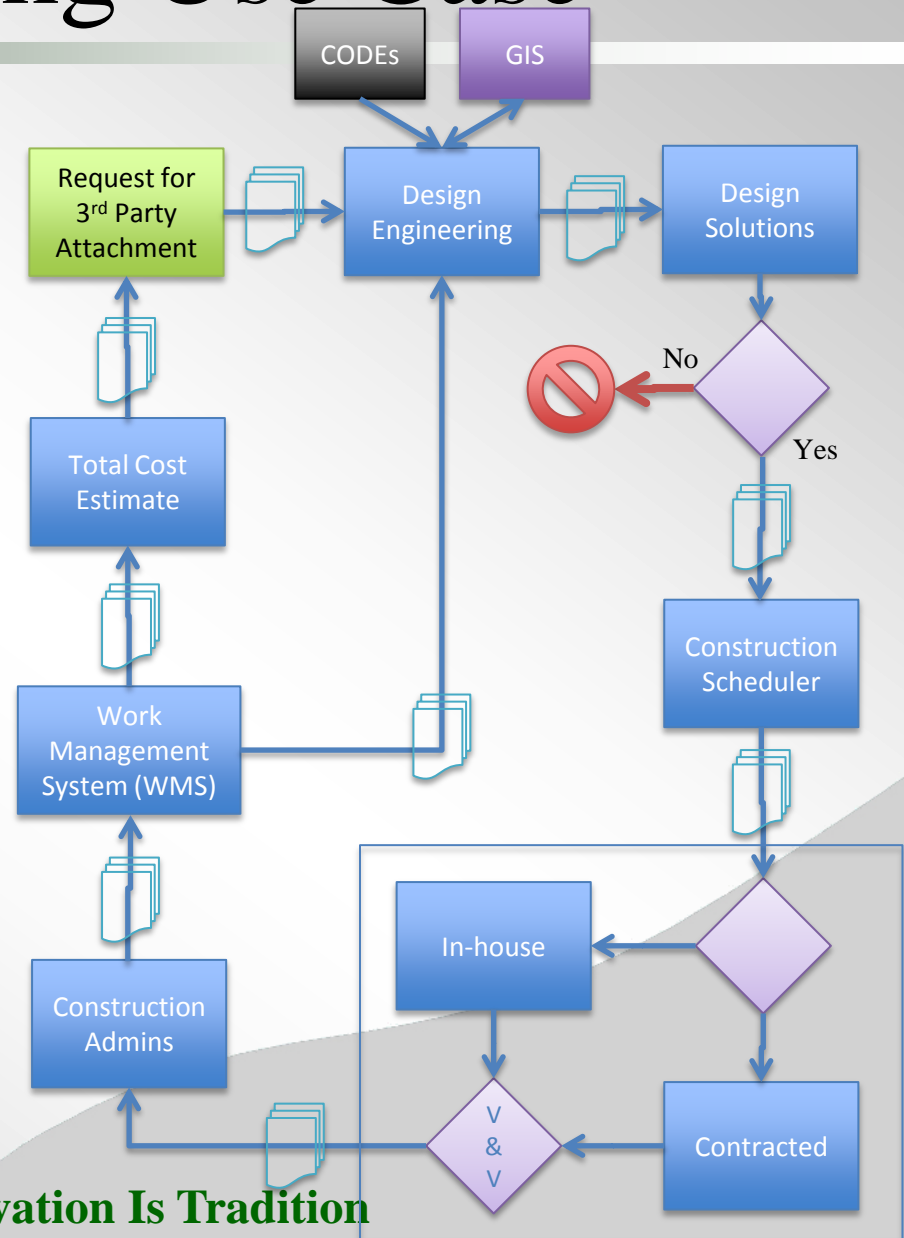
- Proposal submitted to Dr. Hoffman and Mr. Barfield of NOVEC
- Development of gap analysis
 - Done via on-site interviews with:
 - NOVEC Home Office Personnel (GIS, Planners, Analysts)
 - NOVEC Field Crews
 - NOVEC Tree Trimming Contractors
- Development of a requirements document
- Development of an architecture based upon these requirements
 - Verify and validate architecture with sponsor via uses cases

NOVEC Meetings

- Team met with NOVEC Sponsor on 9/27, 10/4/
 - Developed Current Process Use Cases associated with Make-Ready Work
 - Acquired 2011-2012 Survey Database with Joint Use Pole (JUP) data
 - Acquired Joint Use Notification and Request paperwork
 - Acquired sample Make-Ready Work Request
- Team interview with NOVEC GIS Analysts, 10/17
 - Acquire 10 km² GIS sample set with JUP and Non-JUP
 - Analyze GIS tables, ArcFM (Feeder Manager) application
- Team interview with NOVEC Tree Trimming Contractors, 10/22
 - Observe/Collect Joint Use Poles (JUP) and Non-JUP data

Design Engineering Use Case

1. Request for 3rd Party Attachment
 - Includes a route
2. Design Engineering
 - Evaluates the route using GIS & building Codes
 - Conducts a field assessment
3. Design Solutions
 - Approves / Rejects Request
 - **Note: NOVEC absorbs costs for rejections**
 - Generates work order for installation
 - Generates list of materials
4. Construction Scheduler
 - Generates Job Package
 - Work time estimates
 - Maps & Materials
 - Staking Sheet
 - Inventory & As-built form
 - **Note: this doesn't include 3rd party attachment handling requirements**
5. Work completed 'In-house' or 'Contracted'
 - Supervisor reviews & signs off
 - As-built list
 - Green Sheet
6. Construction Admins
 - Input units / quantity into WMS
 - Capture deltas from Job Package
 - **Note: Time deltas could be attributed to 3rd Party Attachment handling**
7. Work Management System
 - Contains final details for Cost Estimate
 - Provides as-built data to Design Engineering
 - Updates GIS
8. Total Cost Estimate
 - Provides bill to 3rd Party Requestor



Current Project Snags

- NOVEC has initiated a change in scope for the project.
 - Cost data and estimation formulary related to 3rd Party attachments is Customer Sensitive data and will be excluded from project scope
 - Gap Analysis will focus on business process and IT architecture associated with 3rd Party attachments
 - One Week Schedule slip